

Key Facts to Learn

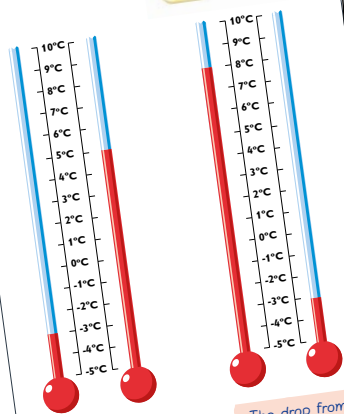
Learning Exercises 7 to 9

L7. Negative numbers

- A **negative number** or amount is less than zero.
- They can also be used for distances underground or below sea level.



- Negative numbers are also used to give temperatures below the freezing point, zero.



Practice Exercise 27a and 27b

Handling Data: Bar Charts

P27a

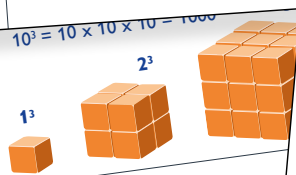
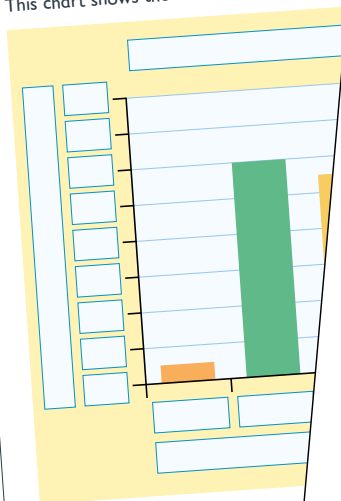
- Year 5 liked these TV programmes best:

TV programmes	Tally	Frequency
Cartoons		10
Soaps		7
Sports		6
Wildlife		4
Quiz shows		1

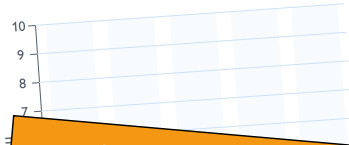
- How many are in the class?
- What fraction liked soaps best?
- Now show this information in a bar chart:

P27b

- This chart shows the number of passengers



Favourite TV programmes in Year 5



Practice Exercise 28b and 28c

Timetables and Line Graphs

P28b continued

- Look at this bus timetable:

BRADSHAW BUSES: TIMETABLE			
Destination	301	302	303
Carsham	8:45am	10:45am	12:45pm
Newton	10:05am	12:05pm	2:05pm
Portsea	10:50am	12:50pm	
Alberton	1:35pm	3:35pm	5:35pm

- How many buses go to Carsham?
- Which bus goes to Newton at 2:05pm?
- How many buses depart from Portsea?

P28c

- Here's a school timetable:

	9:00	9:30	10:00	10:30
Monday	Register	Maths	Break	English

- Nathan has to go to the dentist and will miss 40 minutes of English. What time will he leave?
- After Music it is lunchtime. What time does this start?

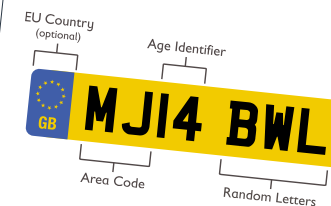
- Alyssa How much math does she do?

jottings

Thinking Tasks 6 to 8

T6. What's the number plate?

- Look for six number plates in this format:



- Next, find out what the different groups of letters and numbers mean. Search for "UK number plates explained" on the internet.
- Now, using first the "Age Identifier" and then the "Area Code", sort your six number plates into date and then alphabetical order.
- Write down some facts about the number plates you have collected, for example:

The earliest (or oldest) number plate is...

- Using the Area Code, what towns or cities are shown on your number plates?
- Did you spot any number plates from non-GB cars? Could you tell what country they were registered in?



T7. Get rich

- You are o



You can have and then do on the second amount (i.e. Continue to every day for

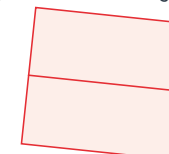
OR

You can have

- Which one would you the most n
- How much mor

T8. How many are t

- Look at this diagram



Can you find nine rectangles in the diagram on your worksheet? Outline the nine rectangles and count all the different rectangles. Now draw a diagram that contains 36 rectangles.